

The logo for Exchange Customized Services (ECS) is displayed in white, bold, sans-serif font within a dark blue rounded rectangular box. The background of the slide is a close-up, high-angle shot of a computer keyboard with various function keys featuring icons like a globe, a magnifying glass, a house, and a lightbulb, all in shades of blue.

# ECS

Customized Service

## INTRODUCTION

**Exchange Customized Services (ECS)**, sub-division of Exchange Technology, facilitates the financial institutions including Exchanges, Clearing Organizations and Regulators with customized development and seamless deployment as per the specific business needs. Core functions of ECS is to provide the services for complete or specific process(es) in project

life-cycle of new/maintenance project with complete implementation and after sales support. ECS has successfully delivered projects required for financial institution including Exchanges, Clearing organizations and regulators.

The logo for 63 moons is located in the bottom right corner. It consists of a dark blue square containing the text '63 moons' in white, with '63' on the top line and 'moons' on the bottom line. A small trademark symbol (TM) is positioned to the right of 'moons'. Below the square, the tagline 'the new digital ecology' is written in a smaller, red, sans-serif font.

63  
moons™

the new digital ecology

[www.63moons.com](http://www.63moons.com)

formerly Financial Technologies (India) Limited



## Products Delivered

Price Polling

Membership

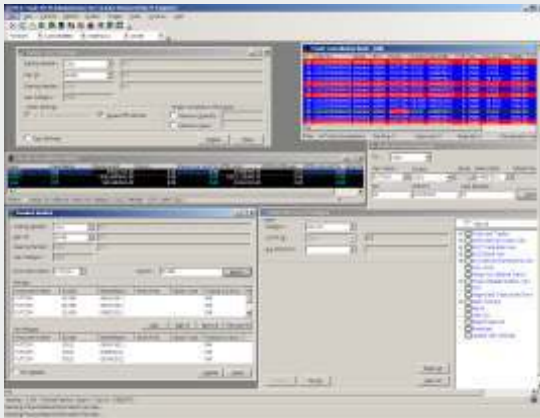
Physical & Electronic Delivery Solution

Regulatory Reports

Listing

IPO

Data Warehouse



# TECHNO FUNCTIONAL EXPERTISE

FTIL complements its innovative customized solutions with strong techno-functional team to help customers to gain a competitive advantage and to solve most of the pressing business needs.

## DEFINING PROCESSES

Defining the effective & efficient business and development processes is major challenge of any new solution, and it needs

in-depth understanding of need and required integration with other systems. ECS uses its strong techno-functional knowledge and market expertise to help in defining the required business process and converting the same into development process with the right technology.

## TIME-BOUND AND COST-EFFECTIVE

Customized software programming development needs highly skilled, professional and experienced development team to complete the project in a time-bound schedule without compromising the quality. ECS keeps the balance between time and cost for delivering the cost-effective solution having the visible return on investment with true cost of ownership.

## SEAMLESS INTEGRATION WITH EXISTING INFRASTRUCTURE

Customized solution with seamless integration into existing infrastructures is always a major challenge to achieve the ease of installation, high performance and enhanced manageability. Enriched experience from the number of customized integration development and implementation of software complement the solution for right fit with existing infrastructure of client.

## QUALITY ASSURANCE

Customized development without quality assurance may deliver the product which might not be suitable for intended purpose and might be instrumental in increasing the operational risk at enterprise level. ECS follows the systematic evaluation of various aspects of projects or services to maximize the probability that minimum expected performance is attained in pre-defined scenarios.

## Client List



# SERVICES OFFERED

## ADVISORY SERVICES

An effective and efficient advisory service is required to clearly define the scope and boundary of the concept/product with scalability and financial feasibility for future growth. ECS Team is enriched with in-depth techno-functional understanding of complete / partial advisory of solutions needed to manage the exchange / clearing organization / Regulatory-level solutions. ECS Advisory Services has proven track record in domains from Membership, trading, settlement, Physical & Electronic stock and delivery management, Penalty & Charges and reporting tools for Commodity, Capital, FX and OTC market.

## REQUIREMENT DOCUMENTATION

Requirement Document is a critical part of complete development of any product as it becomes base document for creating all artifacts in product life-cycle for delivering the final product. For creating Requirement Documents, strong domain knowledge of the respective subject with ability to map requirement and space for flexibility in business is needed. Business Team from ECS is having diverse experience of creating document with flexible business rules and visual depiction of gathered requirement with flavor of International practices. Requirement gathering includes the Initiation, System concept development, planning, requirement analysis and documentation.

## PROJECT DEVELOPMENT AND MAINTENANCE INTEGRATION

ECS has Development Team comprising developers, database experts and architects responsible for development and maintenance of solutions as per global standards.

Development life-cycle for new and maintenance requires design and development with scalability of solution. Development of any project can be initiated either with Requirement Documentation from the ECS Team or third-party.

## PROJECT QUALITY CHECK

Quality Team has pool of members having strong domain knowledge with expertise in automation and manual testing of application. Quality Team extends the checking beyond ascertaining the reliability and validity of the developed project to find whether the right functionality is developed with proposed requirement. Quality Team is accustomed to work with third-party Development Team for independent quality check.

## PROJECT IMPLEMENTATION

Project implementation includes from checking of expected environment to actual deployment of project / Product with pre-defined set of parameters. Implementation of financial products needs extra attention and planning with respect to time and migration of data. ECS Team is enriched with implementation experience of various real-time and offline products at various Exchanges and Clearing Houses.

## USER ACCEPTANCE TESTING

User Acceptance testing includes the validating the Requirement Document with actual development of product and user convenience to achieve desired output. ECS Team is enriched with a pool of domain experts for User Acceptance Testing through manual testing and automated tools. Test cases can be either written by ECS Team or given by vendor.

# SYSTEMS DEVELOPMENT LIFE-CYCLE (SDLC) LIFE-CYCLE PHASES

